



# Extended Speed Summary Report

Generated by Lauren Tirone from City of Amesbury  
 on Sep 12, 2017 at 9:18:19 AM  
 Site: 81 Market Street, NB

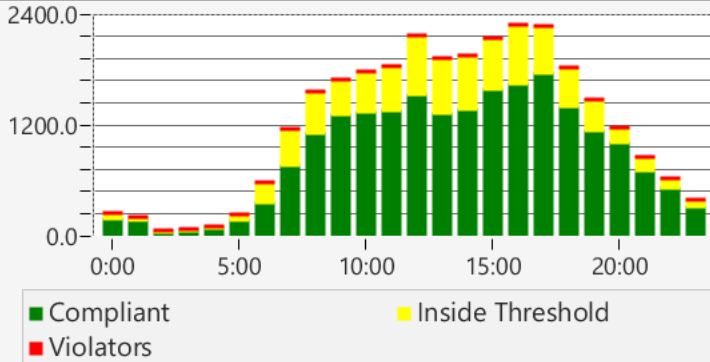
Time of Day: 0:00 to 23:59  
 Dates: 8/19/2017 to 8/25/2017

*A sign of the future.™*

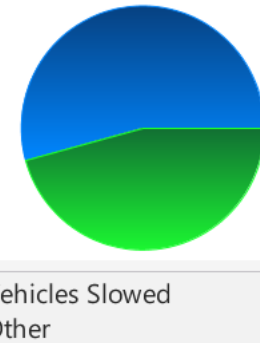
## Overall Summary

Total Days of Data: 7	Minimum Speed: 5
Speed Limit: 30	Maximum Speed: 59
Average Speed: 24.96	Display Status: Displayed Vehicle Speeds
50th Percentile Speed: 26.68	Average Volume per Day: 4068.4
85th Percentile Speed: 31.73	Total Volume: 28479
Pace Speed Range: 23 to 33	

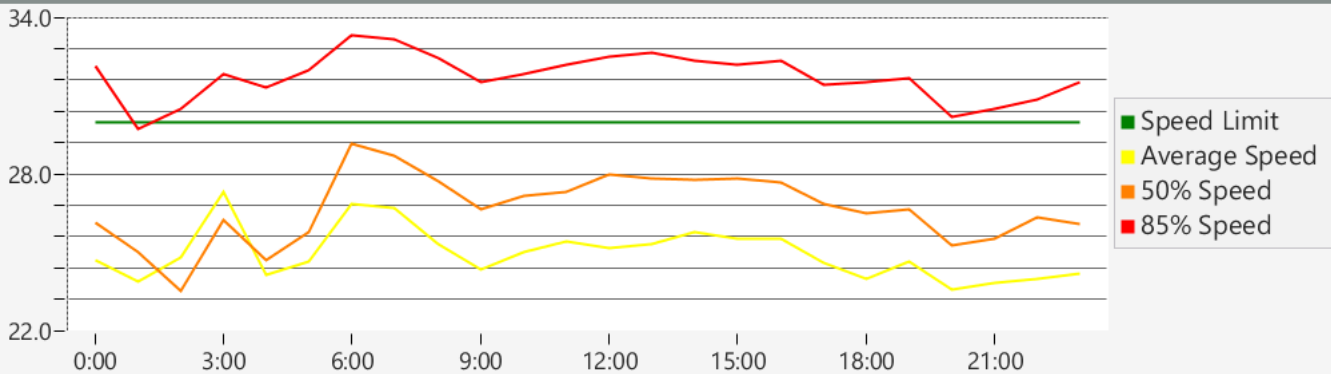
### Volumes by Compliance



### Sign Effectiveness



### Speeds





<b>Total/Avg</b>			0.0	0.0	0.0 %	0.0	0.0	0.0	0.0	0.0	0.0	0.0	0.0 %
<b>Total/Avg w/</b>			28479.0	76.0	0.5 %	4647.2	12.2	5.0	59.0	25.0	26.7	31.7	54.3 %